



Tsugawa Nursery, Inc.  
410 E. Scott Avenue  
Woodland, WA 98674  
(360) 225-8750 Fax: (360) 225-5086  
E-mail: [sales@tsugawanursery.com](mailto:sales@tsugawanursery.com)  
On the Web: [www.tsugawanursery.com](http://www.tsugawanursery.com)

## GARDENING TIPS FOR JUNE

### PLANTING:

**Biennials:** Sow seeds of Canterbury Bells, foxgloves, hollyhocks, pansies, Sweet William or wallflowers in moist open ground or in pots. Transplanted in the fall, they will bloom next summer.

**Flowers for your Garden:** Be sure to plant seeds of marigolds or nasturtiums in your vegetable garden. They will repel some harmful insects.

**Vegetables:** Sow second planting of beets, radishes, lettuce and carrots. Try planting corn until the 15<sup>th</sup> for a late fall crop. For a winter crop, plant cabbage, broccoli, parsnips in a cooler place in your garden. Keep them well watered. Keep weeds away from young plants. Cucumbers should be planted around June 10<sup>th</sup>; coolness causes bitterness.

**Lettuce:** If yours has a bitter taste or bolts (goes to seed), it is probably because the weather got too hot. Watering well and providing light shade prevents bitterness. Bolting can be reduced by planting summer varieties from now on. To help germination, place seed in the refrigerator and soak down the soil in the row well before planting. Plant where they will be partially shaded during the heat of the day.

**Onions:** The bulbs should be able to push the loose soil away. They can't compete with weeds. Add a light side-dressing of wood ashes, if desired.

### FERTILIZING:

**Asparagus:** Water and fertilize after harvest. Good top growth means food is stored in the roots for next year's crop.

**Trees:** Those planted this year need to be watered deeply once a week. Established trees benefit from a good layer of mulch or compost.

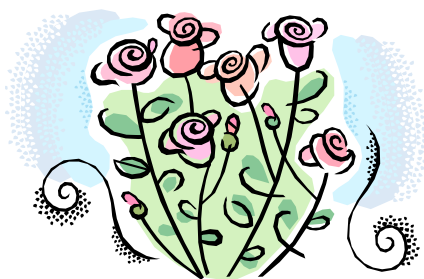
**Camellias, Rhododendrons, Azaleas:** Fertilize for next year's blooms, apply fertilizer after blooming.

**Roses:** It is important let it touch the plants,

**Fuchsias:** Apply light

**Strawberries:** If fruit lies too close to the sprinkling during the

**Bedding Plants:** They phosphorus and formulas work well all



to feed now. Give a complete fertilizer, but don't and water it in well.

feedings once a week to encourage flowering.

exposed to excess moisture when blooming, or if ground, the berries may rot. Avoid overhead bloom season.

need nitrogen during their growth period, then potassium during blooming season. Balanced summer.

## PRUNING:

**Dahlias:** Pinch back to keep from getting leggy. Pinch off tips after the third or fourth set of leaves has formed. Loosely tie tall varieties to stakes now.

**Rhododendrons, Azaleas:** Pick off faded blossoms; be careful of tender new buds. This will help plant's growth. If flowers are allowed to go to seed, they retard new growth, and hamper the formation of next year's buds.

**Fruit Trees:** Clip off watersprouts or suckers... Thin apples after drop so there is one apple about every 6".

**Pines:** Snap off or shorten growth candles. Use hands to break them off; shears injure needles and give the trees brown tips. Do this if you want to control growth or make the plant bushier.

## INSECT AND DISEASE CONTROL:

**Fruit Trees:** Spraying continues when petals fall. Check at garden center for schedule and type of spray.

**Cherry Trees:** When fruit flies emerge, check for county extension announcement. If rains occur also spray for brown rot.

**Red Spider Mites:** Are identified by pale leaves, and rusty spots on undersides. Often spraying water in a strong stream will discourage them, but you may need chemical controls.

**Carrots:** Rusty tips are a sign of root maggot; spread wood ashes to help control; also destroy infected plants. Planting after June 1<sup>st</sup> helps avoid maggots.

**Cabbage, Broccoli, Brussel Sprouts:** Control chewing caterpillars with bT (*Bacillus thuringiensis*).

**Aphids:** If you have a serious infestation you may need chemical control. They can be discouraged by planting sunflowers to attract them, as the aphids may prefer them to your more valuable plants. Ladybugs eat aphids, so encourage them.

## HINTS:

**Mulch:** When mulching ground, water it to a depth of 4" before applying mulch. Mulching makes weeding easier, and it almost eliminates the need for cultivation.

**Grass Cuttings:** It saves fertilizer and effort to mow frequently and leave short cuttings to decompose on the grass.

**Tomatoes:** You shouldn't have added fertilizer until the lower branches have set fruit, so they don't all go to foliage.

**Drying Peas:** Dry then on the vine. If it's rainy, cut the whole plant when most of the pods are mature and hang them upside down in a dry, well-ventilated room. Shell the peas. Before you store them, put them in a shallow tray and cook in the oven at 175 degrees for 10-15 minutes to kill any insect eggs. Keep them in jars.

**Potatoes:** As soon as the vines flower, dig small new potatoes. Dig down directly where the stem of the plant surfaces, so you won't hurt the plant or the yield later.

**Watering:** Water seedlings when they start to dry out; mature plants need less frequent deep watering.